

Anti-FCAR antibody

Cat. No.	ml222356
Package	25 µl/100 µl/200 µl
Storage	-20°C, pH7.4 PBS, 0.05% NaN ₃ , 40% Glycerol

Product overview

Description	Anti-FCAR rabbit polyclonal antibody
Applications	ELISA, WB, IHC
Immunogen	Fusion protein of human FCAR
Reactivity	Human, Mouse
Content	0.2 mg/ml
Host species	Rabbit
Ig class	Immunogen-specific rabbit IgG
Purification	Antigen affinity purification

Target information

Symbol	FCAR
Full name	Immunoglobulin alpha Fc receptor

Synonyms CD89

Swissprot P24071

Target Background

This gene is a member of the immunoglobulin gene superfamily and encodes a receptor for the Fc region of IgA. The receptor is a transmembrane glycoprotein present on the surface of myeloid lineage cells such as neutrophils, monocytes, macrophages, and eosinophils, where it mediates immunologic responses to pathogens. It interacts with IgA-opsonized targets and triggers several immunologic defense processes, including phagocytosis, antibody-dependent cell-mediated cytotoxicity, and stimulation of the release of inflammatory mediators. Multiple alternatively spliced transcript variants encoding different isoforms have been described for this gene.

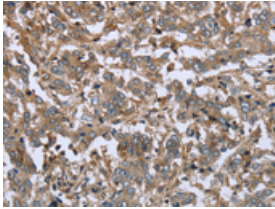
Applications

Immunohistochemistry

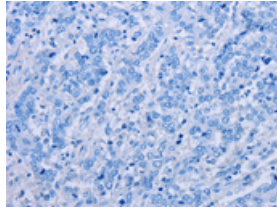
Predicted cell location: Cytoplasm

Positive control: Human liver cancer

Recommended dilution: 25-100



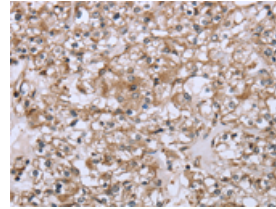
The image on the left is immunohistochemistry of paraffin-embedded Human liver cancer tissue using ml222356(FCAR Antibody) at dilution 1/20, on the right is treated with fusion protein. (Original magnification: ×200)



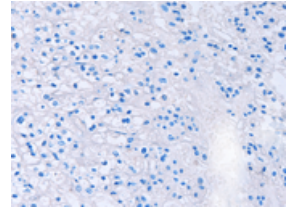
Predicted cell location: Cytoplasm

Positive control: Human prostate cancer

Recommended dilution: 25-100



The image on the left is immunohistochemistry of paraffin-embedded Human prostate cancer tissue using ml222356(FCAR Antibody) at dilution 1/20, on the right is treated with fusion protein. (Original magnification: ×200)



Western blotting

Predicted band size: 32 kDa

Positive control: 293T cells and mouse brain tissue

Recommended dilution: 500-2000

订购热线: 4008-898-798

Gel: 8%SDS-PAGE

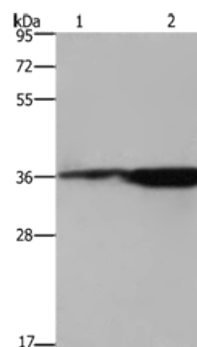
Lysate: 40 μ g

Lane 1-2: 293T cells, mouse brain tissue

Primary antibody: ml222356(FCAR Antibody) at dilution 1/550

Secondary antibody: Goat anti rabbit IgG at 1/8000 dilution

Exposure time: 10 seconds



ELISA

Recommended dilution: 2000-5000

联系电话: 4008-898-798, 021-61725725

联系QQ: 2881505695, 2881505696

邮箱: mlbio_cn@yeah.net

网址: www.mlbio.cn