

## Anti-SLC7A5 antibody

<b>Cat. No.</b>	ml162258
<b>Package</b>	25 µl/100 µl/200 µl
<b>Storage</b>	-20°C, pH7.4 PBS, 0.05% NaN <sub>3</sub> , 40% Glycerol

### Product overview

<b>Description</b>	Anti-SLC7A5 rabbit polyclonal antibody
<b>Applications</b>	ELISA, WB
<b>Immunogen</b>	Synthetic peptide of human SLC7A5
<b>Reactivity</b>	Human
<b>Content</b>	0.4 mg/ml
<b>Host species</b>	Rabbit
<b>Ig class</b>	Immunogen-specific rabbit IgG
<b>Purification</b>	Antigen affinity purification

### Target information

<b>Symbol</b>	SLC7A5
<b>Full name</b>	solute carrier family 7 (amino acid transporter light chain, L system), member 5
<b>Synonyms</b>	E16; CD98; LAT1; 4F2LC; MPE16; hLAT1; D16S469E
<b>Swissprot</b>	Q01650

### Target Background

Solute carrier family 7 member 5 also known as large neutral amino acids transporter small subunit 1 is a protein that in humans is encoded by the SLC7A5 gene. LAT1 is expressed predominantly in adult lung and liver but is also expressed in brain, thymus, retina, testis, placenta, bone marrow and fetal liver. In the retina, LAT1 localizes to the blood-retinal-barrier (BRB) and mediates L-leucine transport from the blood to the retina.

订购热线: 4008-898-798

**Applications**

**Western blotting**

Predicted band size:55 kDa

Positive control:823 cells

Recommended dilution: 500-2000

Gel: 8%SDS-PAGE

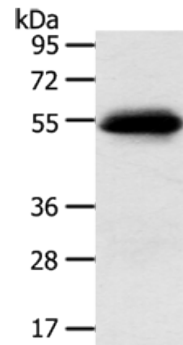
Lysate: 40  $\mu$ g

Lane: 823 cells

Primary antibody: ml162258(SLC7A5 Antibody) at dilution 1/250

Secondary antibody: Goat anti rabbit IgG at 1/8000 dilution

Exposure time: 2 minutes



**ELISA**

Recommended dilution:2000-5000

联系电话: 4008-898-798, 021-61725725

联系QQ: 2881505695, 2881505696

邮箱: mlbio\_cn@yeah.net

网址: www.mlbio.cn